

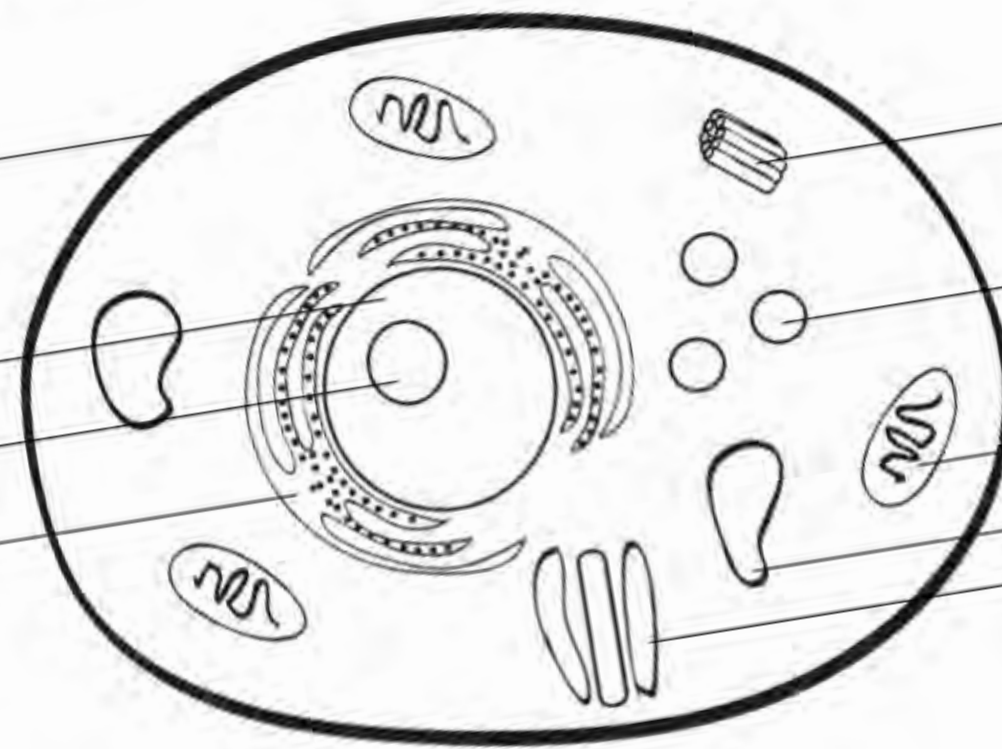
# COMPREHENSIVE CELL UNIT

A unit to teach  
all about cells!

Name \_\_\_\_\_

## LABEL THE CELL

Label the Eukaryote diagram and create a key to identify how you will color the diagram.



Part	Color
Cell Membrane	
Vacuole	
Centriole	
Endoplasmic Reticulum	
Golgi Body	
Lysosome	
Mitochondrion	
Nucleolus	

**KEY**



# COMPLETE LESSON PLANS

You will love our  
easy-to-follow  
lesson plans that  
walk you  
through exactly  
how to introduce  
and teach each  
part of a cell.

## SCIENCE LESSON Cells

### You will need:

- Cells worksheets (Cells, What's My Function #1 and #2, Eukaryotic Animal Cell)

### Instruction:

- Ask the students what the basic unit of life is. The answer is cells. Discuss some different types of cells we have in our bodies and list them on the board.
- Now ask the students if they know what a group of the same type of cell is called. Tissue! Explain that the human body is a system of interacting subsystems made up of groups of cells. You can draw the following diagram on the board to help explain this interaction:

CELL                      TISSUE                      ORGAN                      ORGAN SYSTEM

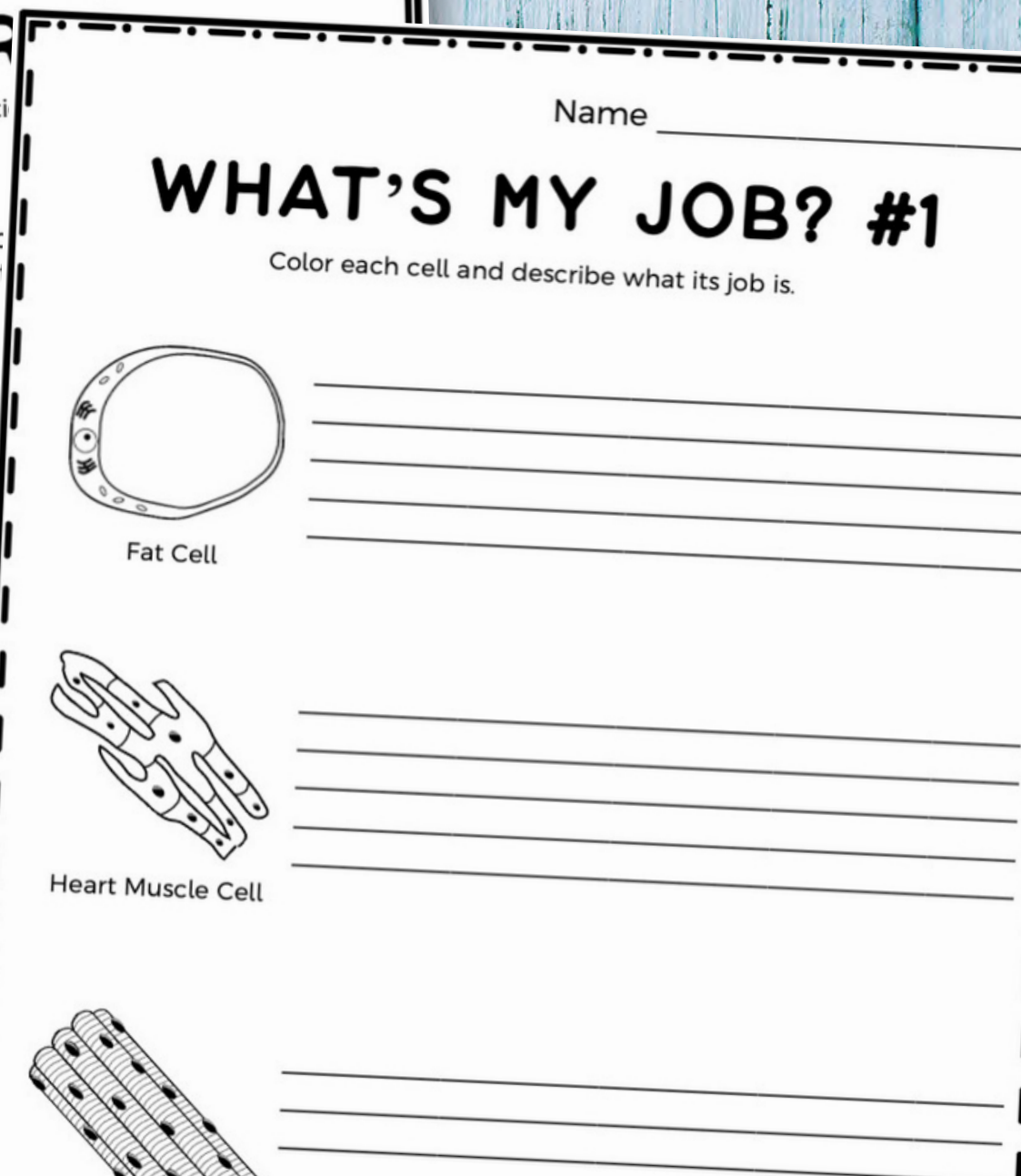
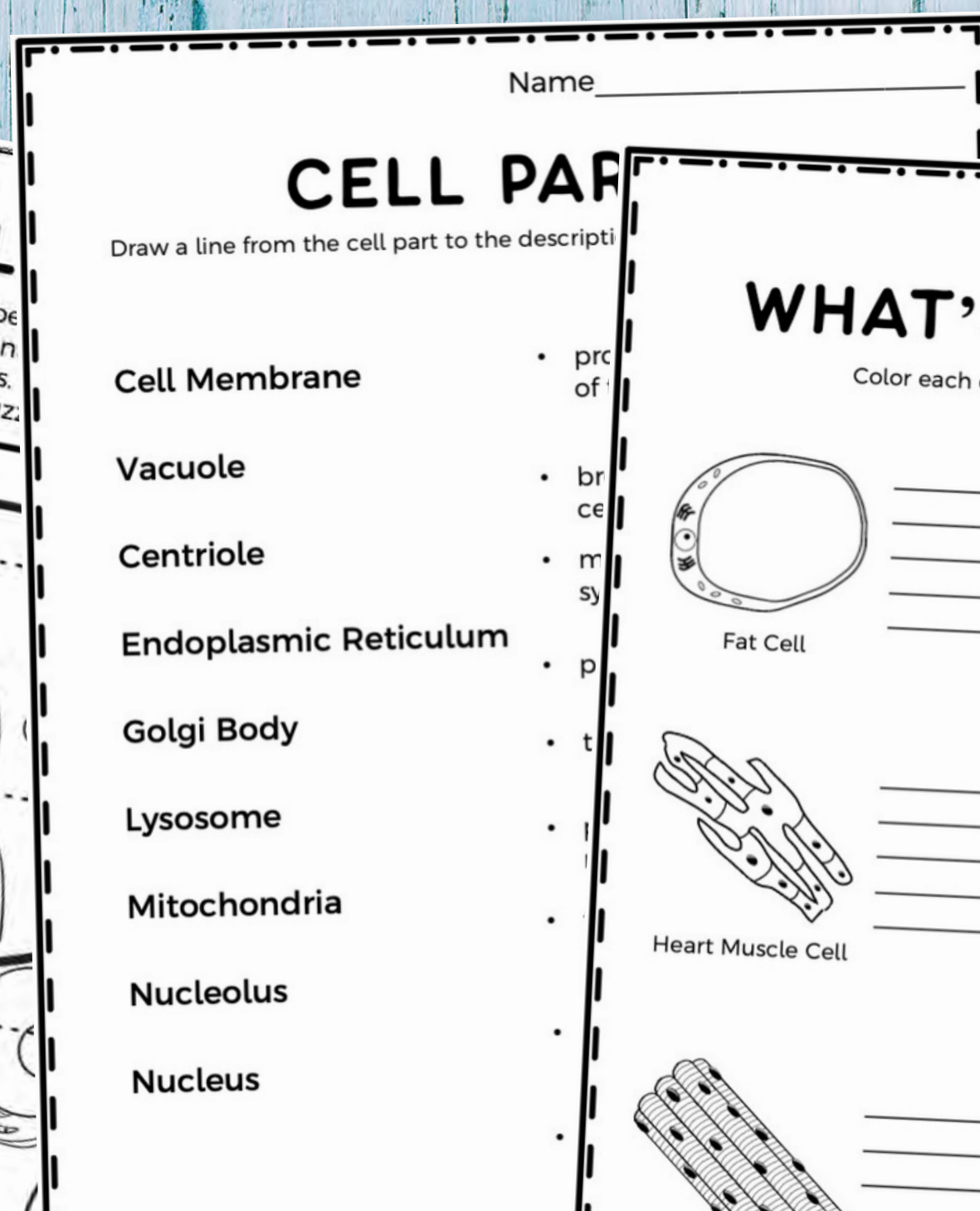
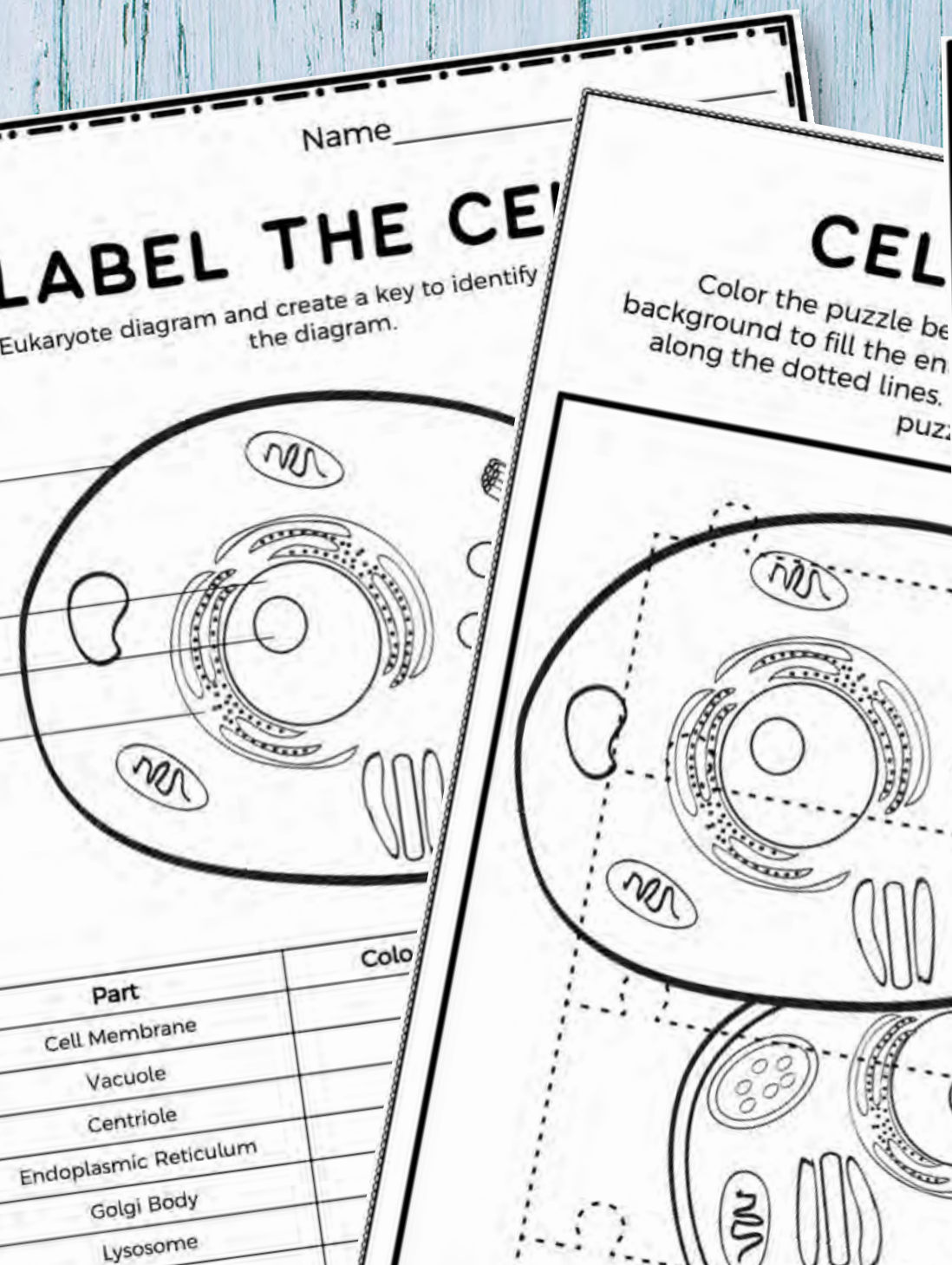
- Brainstorm different interactions of these subsystems. Write ideas that students share on the board. For example: your skeletal system relies on nutrients from your digestive system to build strong, healthy bones.
- Hand out the **cell worksheets** to the students. Monitor and assist the students with their work as needed.

Notes:



# MULTIPLE CELL CENTERED ACTIVITIES

Your students will love each and every cell centered worksheet that we have included!





# ANSWER KEYS

Easy-to-use  
answer keys will  
save you time  
while assessing  
each worksheet.

**ANSWER KEY**

## LABEL THE CELL

Label the Eukaryote diagram and create a key to identify how you will color the diagram.

Labels on the left: Cell Membrane, Nucleus, Nucleolus, Endoplasmic Reticulum.

Labels on the right: Centriole, Lysosome, Mitochondria, Vacuole, Golgi Body.

Part	Color
Cell Membrane	Black
Vacuole	Light Green
Centriole	Green
Endoplasmic Reticulum	Blue
Golgi Body	Pink
Lysosome	Orange

**KEY**